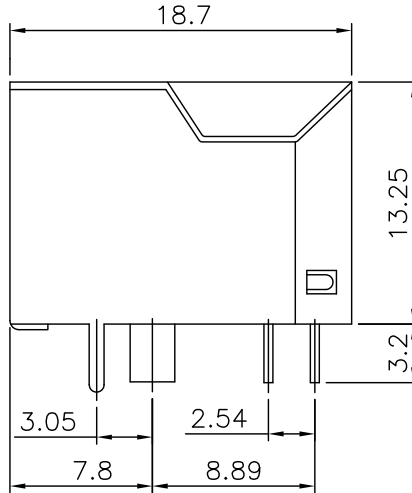
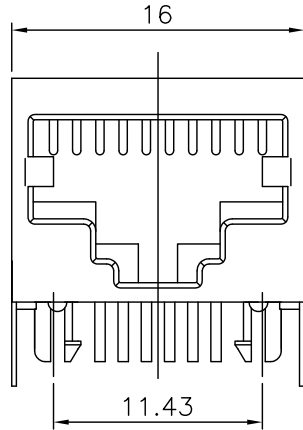


RoHS Compliant

Customer Drawing

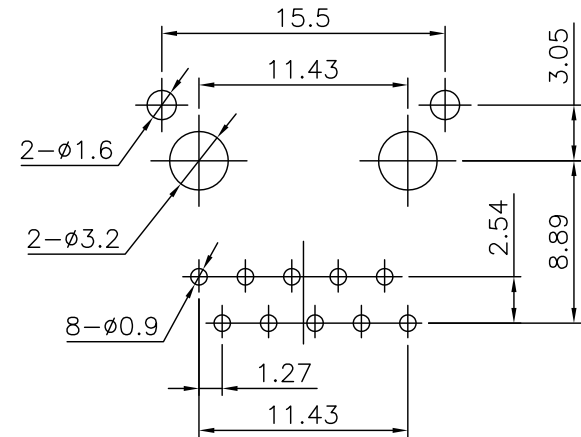
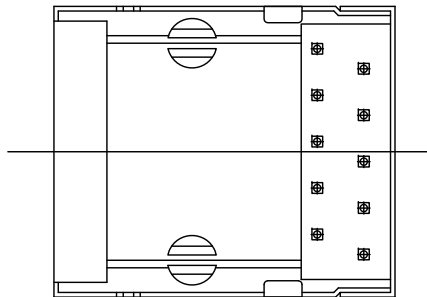
Specifications:  
 Current Rating:1.5 Amp  
 Voltage Rating:125V AC/DC  
 Contact resistance:30m Ohm Max  
 Insulator resistance:500M ohm min.@ 500V DC.  
 Withstanding Voltage:1000V AC/Minute  
 Operating Temperature Range:-40°~+85°C  
 Relative Humidity:90~95%(40±2°C)  
 Material And Finish  
 Insulator:Grass Filled Polyester UL94V-0  
 Contact:Phosphor Bronze  $\phi$ 0.46mm  
 Contact Plated:Gold plating Over Nickel  
 Operating:750 Cycles min.  
 Shielding:0.23mm Thickness Copper Alloy With Nickel Plated  
 PCB Retention Pre-solder:1 LB min.  
 How To Order  
 MJCR-001M-10XXX-B



Insulator Color  
 B:Black  
 W:White  
 Contact Plated  
 No. of Contact  
 8:8C  
 10:10C  
 No. of Positions  
 M:With Shielded

Contact Plated

| Code | Contact Plated | Code | Contact Plated |
|------|----------------|------|----------------|
| G1   | Gold 3u"       | G6   | Gold 30u"      |
| G2   | Gold 6u"       | G7   | Gold 50u"      |
| G4   | Gold 15u"      | P5   | PD 20u"        |



Recommended PCB Layout

|      |          |              |             |
|------|----------|--------------|-------------|
| 1.3  |          |              |             |
| 1.2  |          |              |             |
| 1.1  |          |              |             |
| 1.0  | RELEASED | Zhou songlin | 13-Apr-2007 |
| REV. | ECN. NO. | DR.BY        | DATE        |



MAT'L: FINISH:

|                    |            |                            |                             |                   |
|--------------------|------------|----------------------------|-----------------------------|-------------------|
| x.X: $\pm$ 0.20    | ANGLE      | TITLE : 10PXC Modular Jack |                             | <b>A4</b>         |
| x.XX: $\pm$ 0.15   | $\pm$ 5.0° |                            |                             |                   |
| x.XXX: $\pm$ 0.075 |            | APPD.: Alan Chao           | PRAT NO : MJCR-001M-10XXX-X |                   |
| UNIT: mm           |            | CHKD.: Cel Wang            | DWG. NO.: RDA070413-009(DY) |                   |
| SCALE: 1:1         | SHEET: 1/1 | DR.: Zhou songlin          | REV.: 1.0                   | DATE: 13-Apr-2007 |